



RECLAIMED PLANK BEAM SAWN OAK

Wide Plank Flooring

Beam Oak Flooring is comprised of oak boards that are sawn from beams that were harvested from the forest 100-200 years ago producing a unique color and quality that is just not available today. Most of the traditional characteristics found in a classic oak floor are found within the reclaimed beam sawn oak floor, but with a superior wood fiber. This slow grown material has a unique rich color when finished that is simply not able to be replicated.

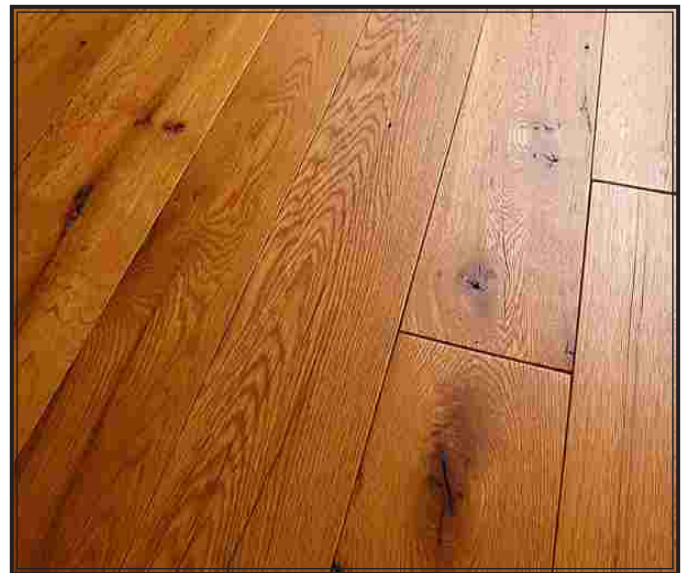
Beam Oak Flooring originates from the oak beams found throughout the barn structures that are deconstructed. These oak beams have many shapes, sizes, and textures, but once sawn into they are yielding prized oak boards that have much to offer. These beams were cut from trees that grew in the time of prized timberland. These trees grew in dense forest where there was competition for light, water, and nutrients which resulted in very slow growth. The slow growth oak trees are now yielding some of the finest oak boards, far different from any material harvested

SPECIFICATIONS

Plank Widths	3-5", 4-7", 5-9", 10"+ available upon request
Plank Lengths	2-12'
Plank Thickness	3/4"
Edges	Square, Micro-Beveled or Handscraped
Texture	Planed Smooth
Profiles	Tongue and Groove, Square Edge or Ship- lap

100% GREEN

- Made in the U.S.A.
- Manufactured in N.H.
- Bingham's office, showroom, kilns and manufacturing plant are heated by using wood waste



*Please note that wood is a natural product and because of this we recommend ordering samples of our products before making your flooring choice. We will send multiple pieces of each product to give a full representation of the grade and specie. Together, these pieces represent the grade, specie or product specified. Please do not reference an individual sample, piece of the sample or image as an accurate representation of the entire grade, specie or product. Please consult your sales representative with any questions or to request more samples.

