



CLASSIC PLANK WALNUT

Wide Plank Flooring

Wide Plank Black Walnut Flooring is a unique and refined hardwood specie. We offer two grades in this unrivaled flooring option. Our Select Grade will feature rich chocolate heartwood, varying degrees of blonde sapwood, minor feathering and small pinhole knots. Our Sawyers Grade contains much of the same coloration as the select, yet allowing for a more rustic appearance containing sound knots and bark inclusions. A softer yet durable hardwood, Black Walnut has been used in all facets of woodworking. We recommend pairing our Black Walnut Flooring with an oil based finish to bring out the depth and richness that naturally occurs within this flooring specie.

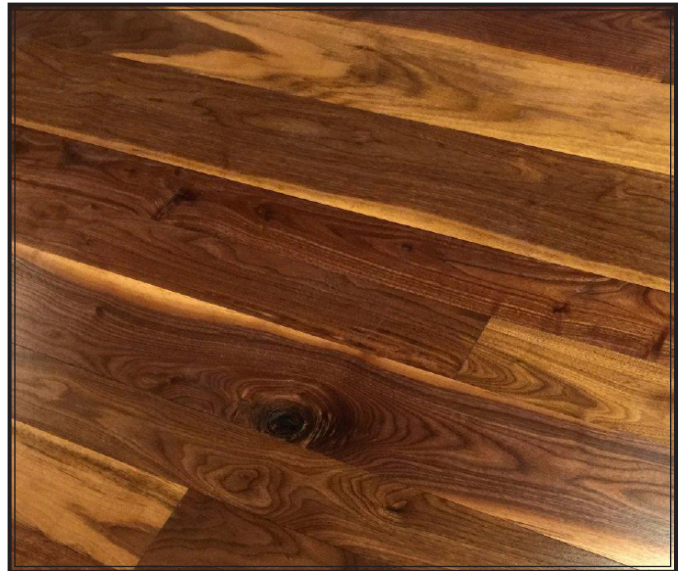
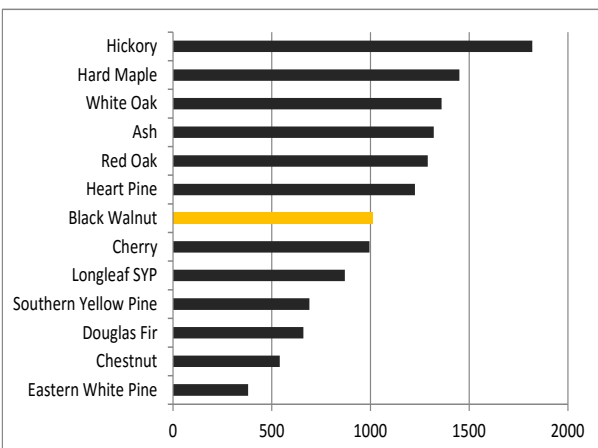
Black Walnut trees can be found in much of North America. Much of the walnut's are harvest from trees in California. The roots of a walnut tree can grow up to 50 feet from the base and emits an herbicide poisonous to many other plants and trees. It is also planted on hills and countrysides to help prevent erosion and is extremely resistant to pests and decay.

SPECIFICATIONS

Plank Widths	3-5", 4-7", 5-9", 10"+ available upon request
Plank Lengths	2-12'
Plank Thickness	3/4"
Edges	Square, Micro-Beveled or Handscraped
Texture	Planed Smooth or Saw Kerf
Profiles	Tongue and Groove, Square Edge or Ship- lap

100% GREEN

- Made in the U.S.A.
- Manufactured in N.H.
- Bingham's office, showroom, kilns and manufacturing plant are heated by using wood waste



*Please note that wood is a natural product and because of this we recommend ordering samples of our products before making your flooring choice. We will send multiple pieces of each product to give a full representation of the grade and specie. Together, these pieces represent the grade, specie or product specified. Please do not reference an individual sample, piece of the sample or image as an accurate representation of the entire grade, specie or product. Please consult your sales representative with any questions or to request more samples.